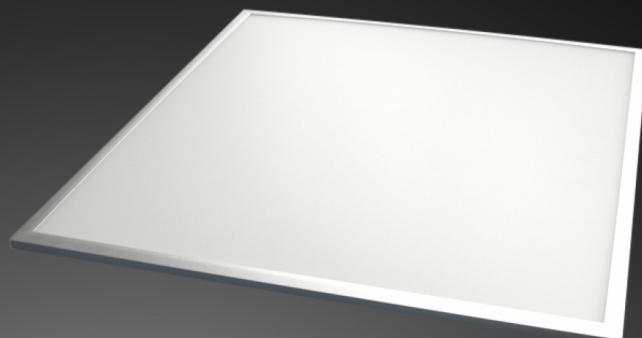


LED Panels SL

Magnolux LED Panels of SL Series with their improved luminance are the most efficient and environmentally friendly alternative to traditional ceiling grid lights.



LED Panel SL - Q45-4000-FS-MP

HIGHLIGHTS

- » available with motion sensor, light sensor and emergency mode for 3 hours
- » dimming with DALI system and with RGB lighting available
- » various frame designs and panel dimensions
- » microprismatic diffusor optional

APPLICATION AREA

Offices, Schools, Hotels, Banks, Hospitals, Restaurants, Shops, Public Buildings, Entrance Halls, Corridors, etc.



SPECIFICATIONS

Artikel Number	101763
Product Name	LED Panel SL
Model	Q45-4000-FS-MP
Lumen Output	3200 Lumen
LED Power	40 Watt
Power Consumption	45 Watt
Input Voltage/Hertz	220-240 V / 50-60 Hz
Light Color	4000 Kelvin
Color Rendering Index	>80
LED Type	SMD
Beam Angle	120°
Lifetime	50000 h
Environment Temperature	-40°C / +40°C
Material	Alu Flat Frame silver/PC microprismatic
Product Dimensions	595 x 595 x 9 mm
Product Weight	4000 g
Certificates	CE
Safety Type	IP40
PCS/Package	1
Packaging Size	700 x 700 x 25 mm
Weight/Packaging	5000 g
Product Info	ceiling cut-out 582 x 582 mm